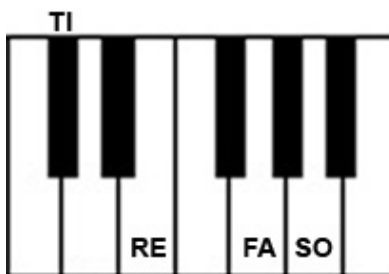
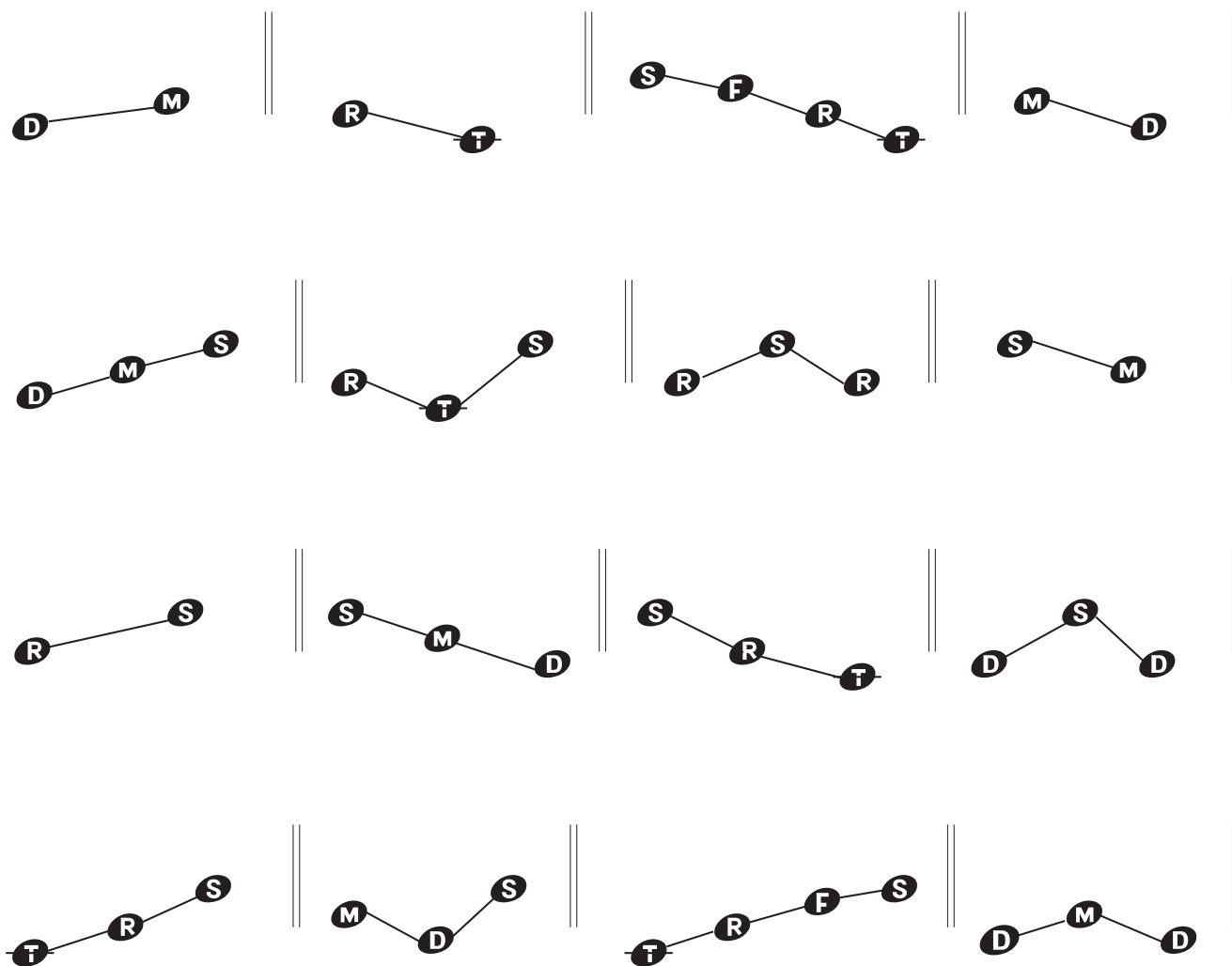


Reading I and V Tonal Patterns in D Major

PRE-STAFF NOTATION

Reading Familiar Patterns in Familiar Order - Syllable Patterns with Directional Lines

1. Establish tonality by singing a I-V-I melodic cadence, or tonal sequence in D major
2. Read each tonal pattern, following the directional lines.
3. Sing the pattern using tonal syllables, audiate the pattern, then play the pattern (SAP).
4. Play these with the right hand, then with the left hand, remember to follow the procedure of SAP.

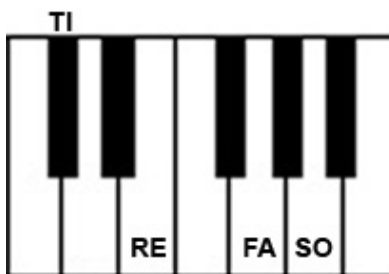


Reading I and V Tonal Patterns in D Major

PRE-STAFF NOTATION

Reading Familiar Patterns in Familiar Order - Within Blocked Harmony

1. Establish tonality by singing a I-V-I melodic cadence, or tonal sequence in D major
2. Read each tonal pattern, following the directional lines.
3. Sing the pattern using tonal syllables, audiate the pattern, then play the pattern (SAP).
4. Play these with the right hand, then with the left hand, remember to follow the procedure of SAP.

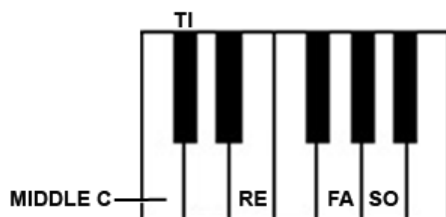
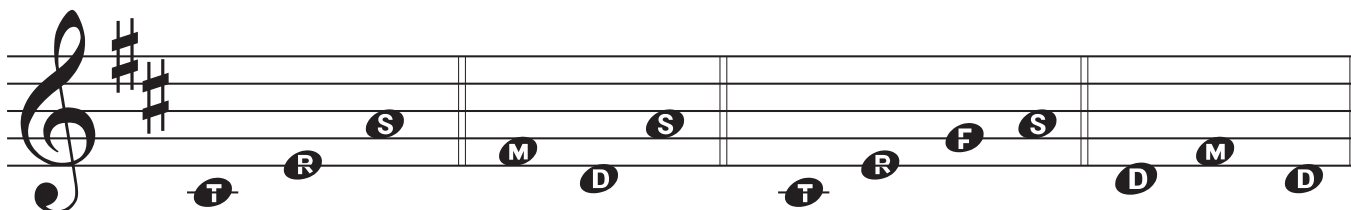
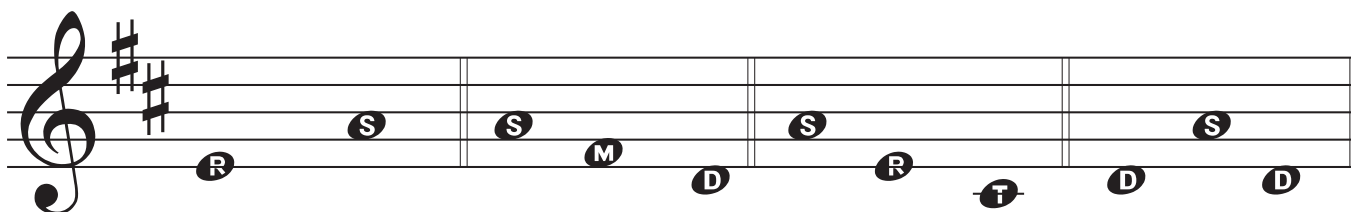
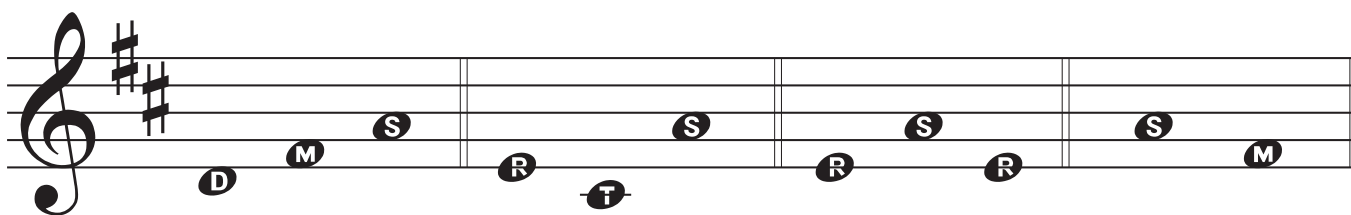
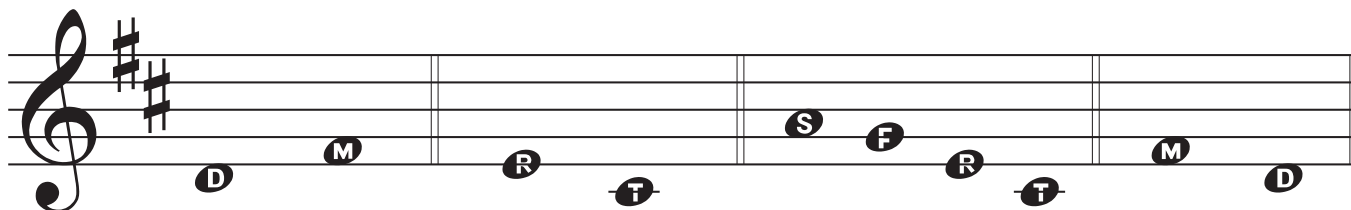


Reading I and V Tonal Patterns in D major

TREBLE CLEF

Reading Familiar Patterns in Familiar Order - Associating tonal syllables with notation.

1. Establish tonality by singing a I-V-I melodic cadence, or tonal sequence in D major.
2. Sing the pattern using tonal syllables, audiate the pattern, then play the pattern (SAP).
3. Play these with the right hand.

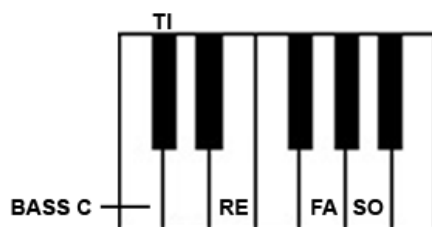
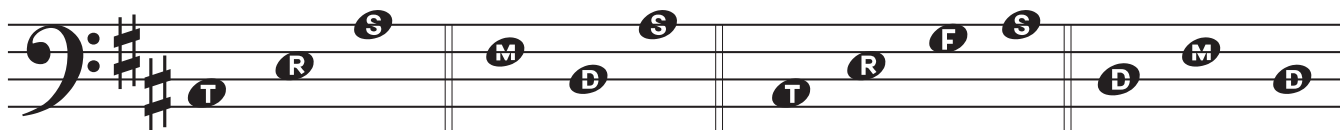
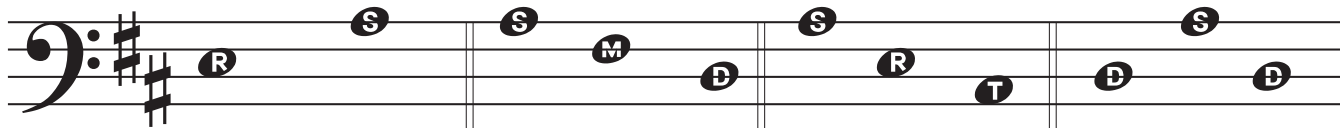
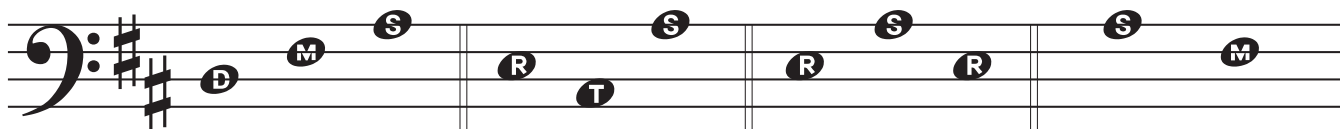
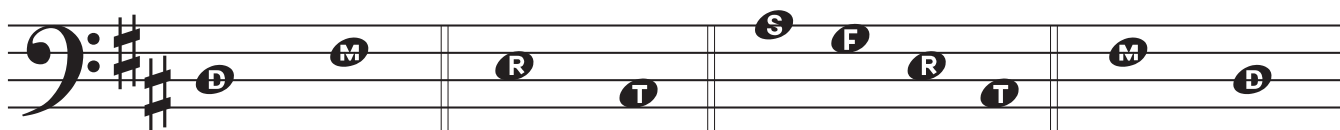


Reading I and V Tonal Patterns in D major

BASS CLEF

Reading Familiar Patterns in Familiar Order - Associating tonal syllables with notation.

1. Establish tonality by singing a I-V-I melodic cadence, or tonal sequence in D major
2. Sing the pattern using tonal syllables, audiate the pattern, then play the pattern (SAP).
3. Play these with the left hand.



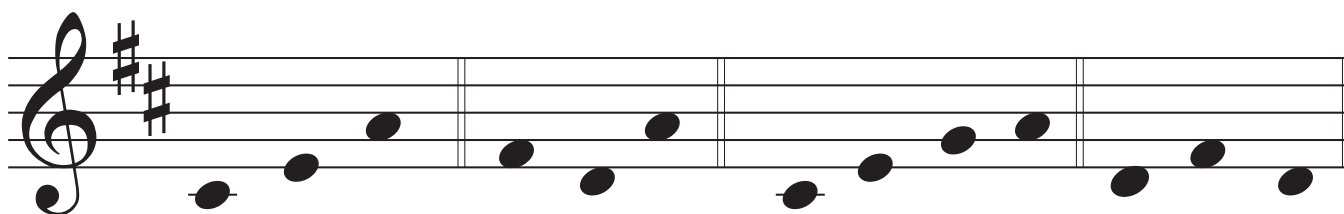
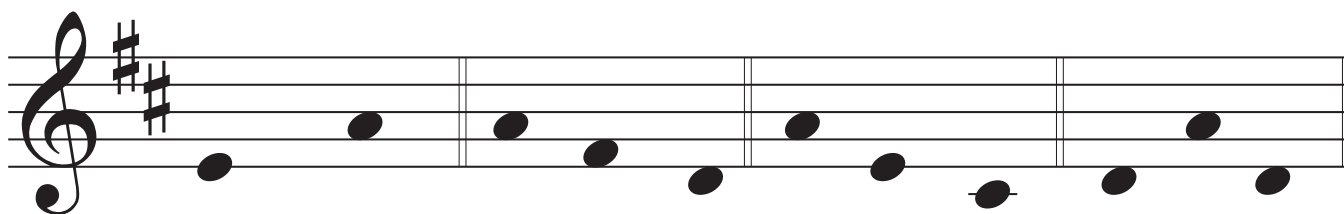
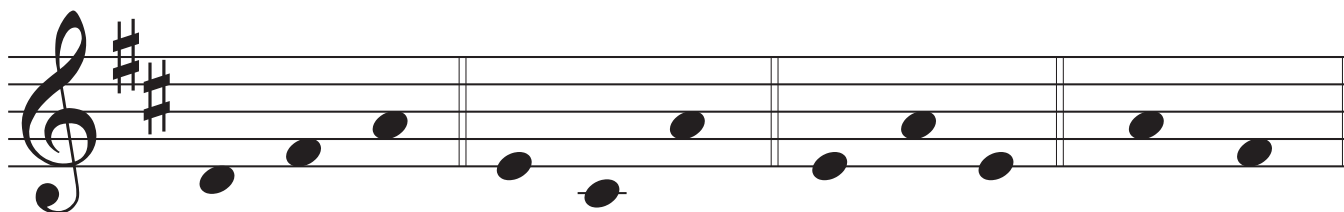
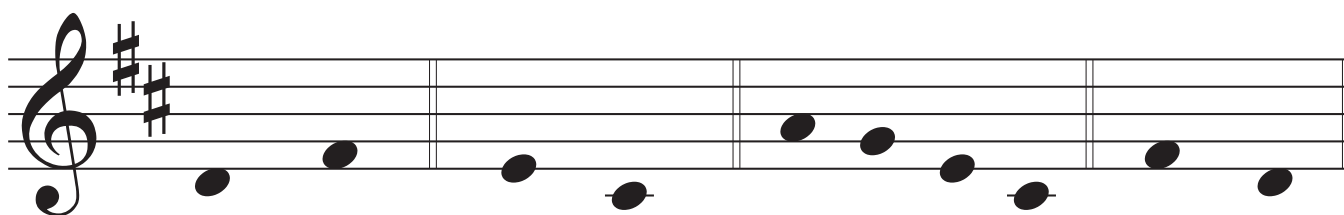
Reading I and V Tonal Patterns in D major

TREBLE CLEF

Reading Familiar Patterns in Familiar Order

Reading notation by performing tonal syllables with syllables not shown

1. Establish tonality by singing a I-V-I melodic cadence, or tonal sequence in D major.
2. Sing the pattern using tonal syllables, audiate the pattern, then play the pattern (SAP).
4. Play these with the right hand.



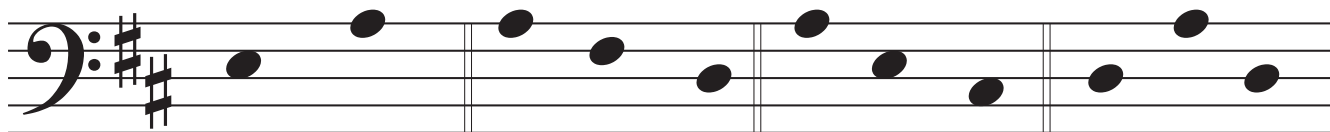
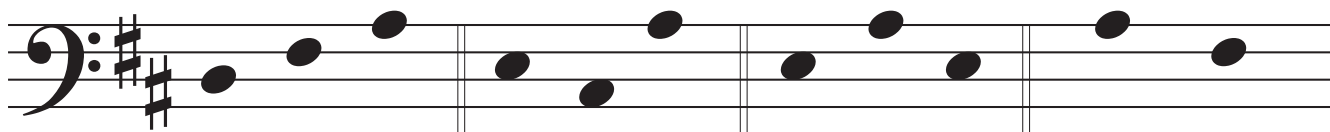
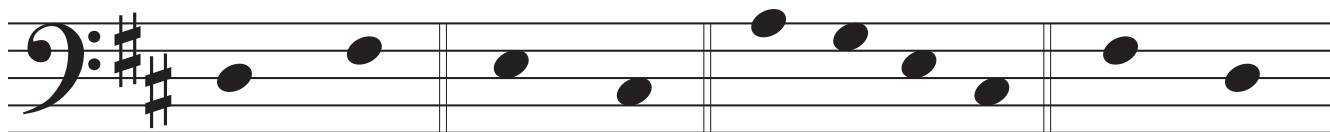
Reading I and V Tonal Patterns in D major

BASS CLEF

Reading Familiar Patterns in Familiar Order

Reading notation by performing tonal syllables with syllables not shown

1. Establish tonality by singing a I-V-I melodic cadence, or tonal sequence in D major
2. Sing the pattern using tonal syllables, audiate the pattern, then play the pattern (SAP).
3. Play these with the left hand.

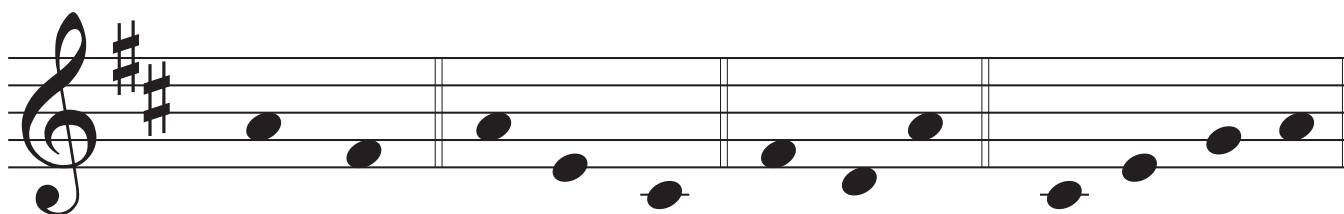
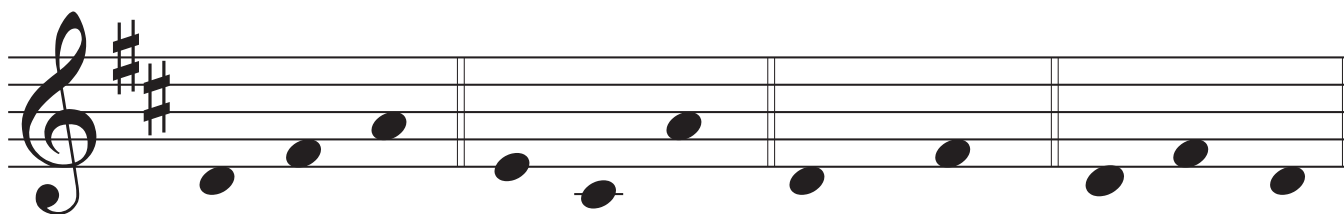
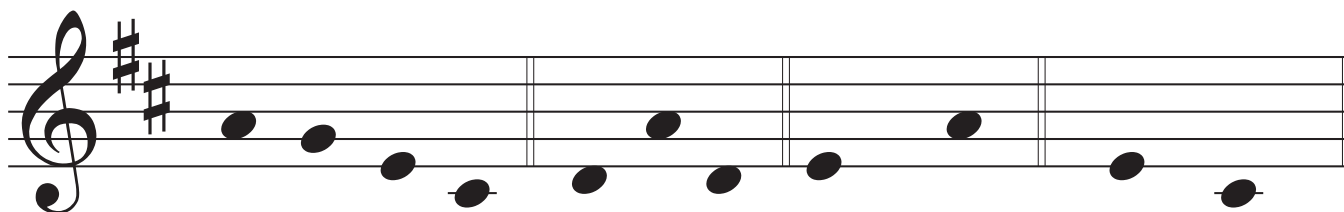
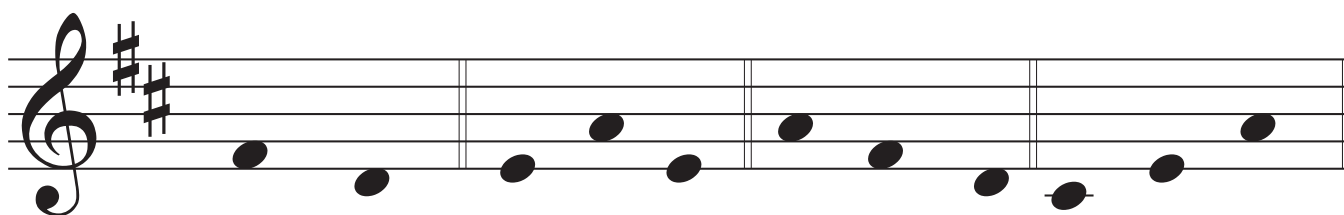


Reading I and V Tonal Patterns in D major

TREBLE CLEF

Reading Familiar Patterns in Unfamiliar Order Reading notation by performing tonal syllables with syllables not shown

1. Establish tonality by singing a I-V-I melodic cadence, or tonal sequence in D major.
2. Sing the pattern using tonal syllables, audiate the pattern, then play the pattern (SAP).
4. Play these with the right hand.



Reading I and V Tonal Patterns in D major

BASS CLEF

Reading Familiar Patterns in Unfamiliar Order

Reading notation by performing tonal syllables with syllables not shown

1. Establish tonality by singing a I-V-I melodic cadence, or tonal sequence in D major
2. Sing the pattern using tonal syllables, audiate the pattern, then play the pattern (SAP).
3. Play these with the left hand.

